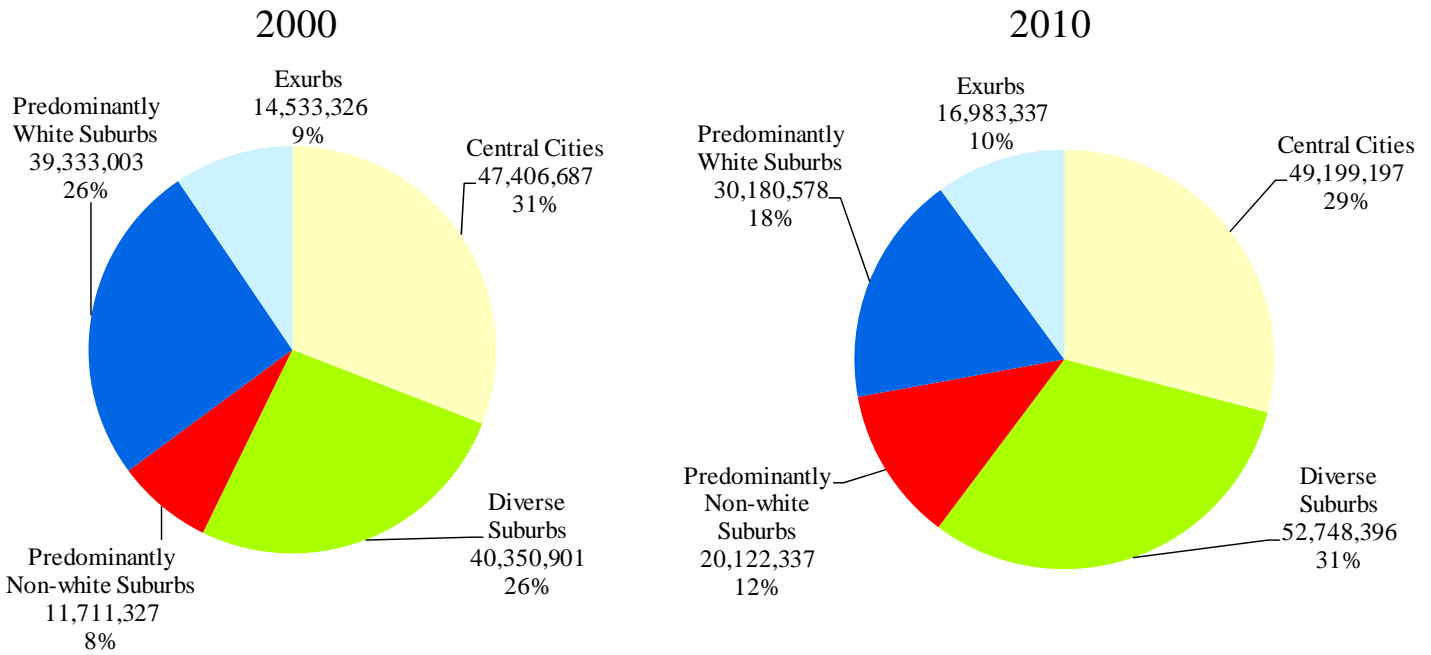


# America's Racially Diverse Suburbs: Opportunities and Challenges

## 50 Largest U.S. Metropolitan Areas

### Community types in the 50 largest metropolitan areas



### Characteristics of the Community Types in the 50 largest metropolitan areas

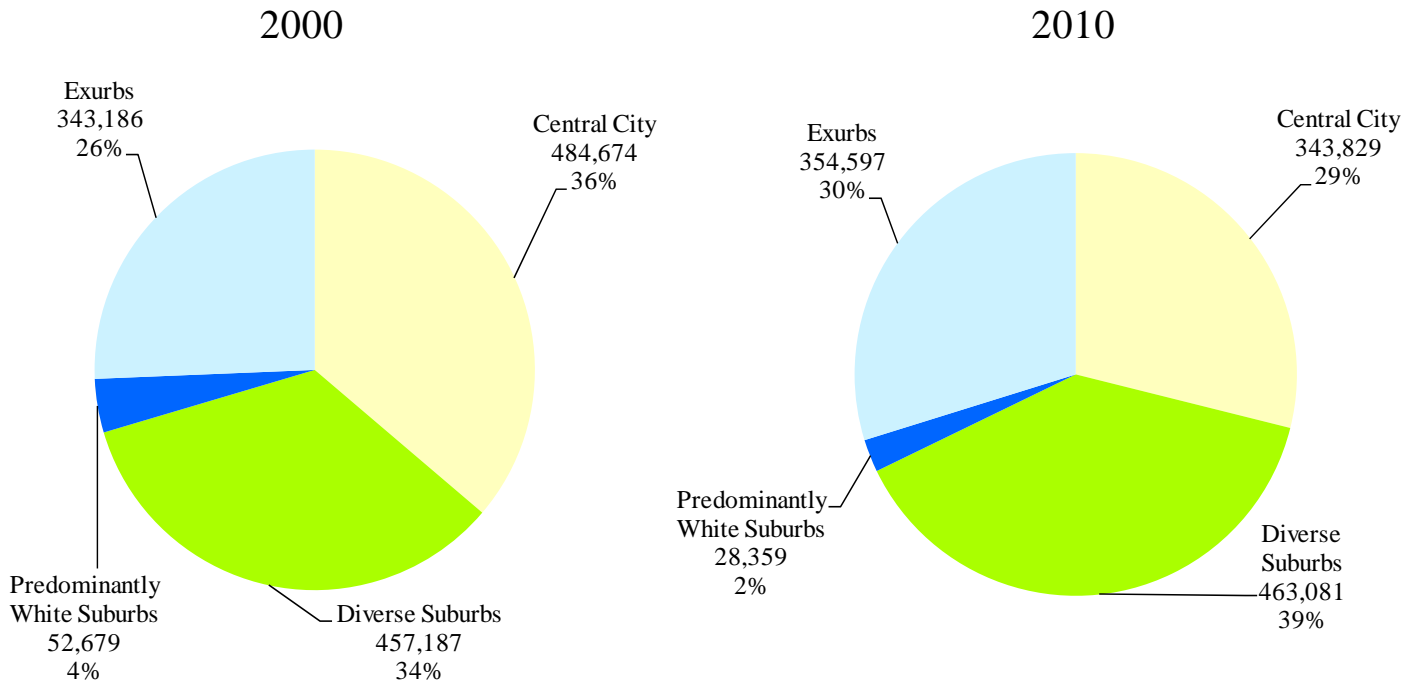


Data Sources: Population, income and poverty—Census Bureau; Jobs—Local Employer-Household Dynamics Program; Tax base—various state and local government sources.

# America's Racially Diverse Suburbs: Opportunities and Challenges

## New Orleans Metropolitan Area

### Community Types in New Orleans



### Characteristics of the Community Types in New Orleans



Data Sources: Population, income and poverty—Census Bureau; Jobs—Local Employer-Household Dynamics Program; Tax base—various state and local government sources.

# New Orleans Metropolitan Area: Fact Sheet

## Breakdown of Community Type

	2010 <u>Population</u>	Share of Metro <u>Population</u>	Share of Suburban <u>Population</u>
Diverse	463,081	39	55
Predominantly non-white	0	0	0
Predominantly white	28,359	2	3
Exurb	354,597	30	42
Central City	343,829	29	

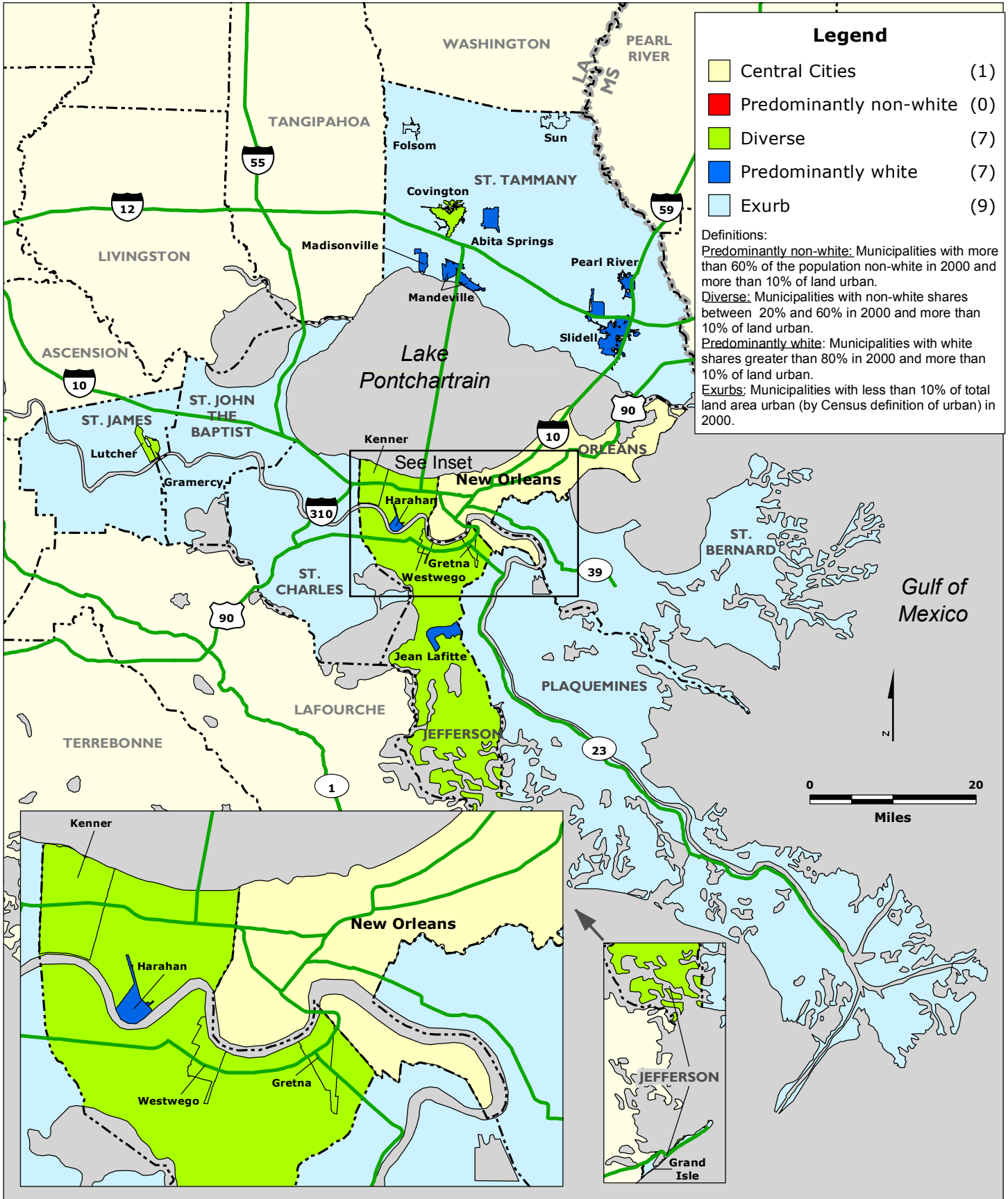
## Examples of Large Diverse Suburbs

	2000 <u>Population</u>	2010 <u>Population</u>	2010 % of Population <u>Non-white</u>
Unincorporated Jefferson Parish	343,200	327,104	44
Kenner city	70,517	66,702	51
Slidell city	25,695	27,068	27
Gretna city	17,423	17,736	52
Covington city	8,483	8,765	25
Westwego city	10,763	8,534	30
Gramercy town	3,066	3,613	49
Lutcher town	3,735	3,559	54

## Examples of Suburbs in Rapid Transition

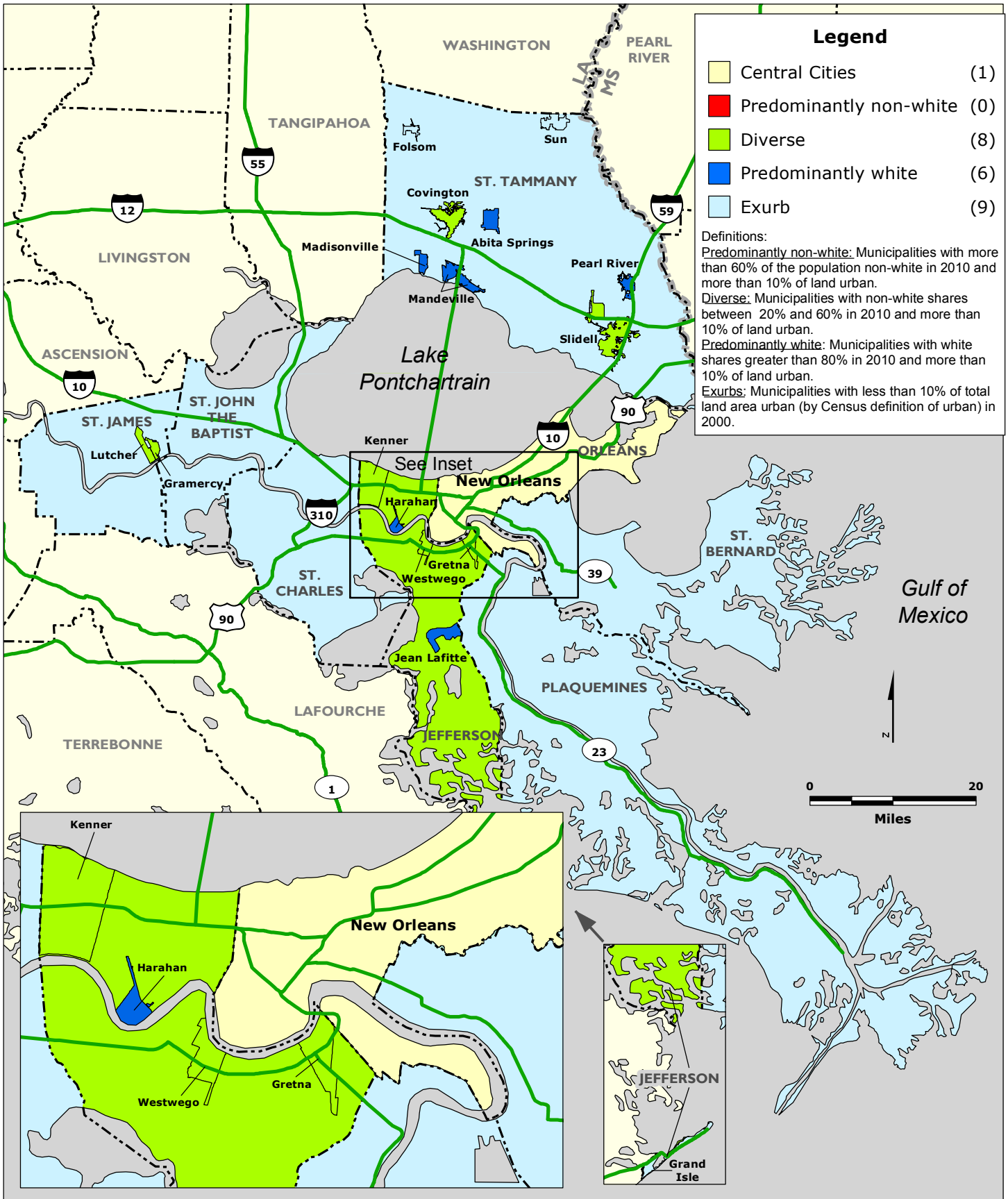
	2000 % of Population <u>Non-white</u>	2010 % of Population <u>Non-white</u>	% Point <u>Change</u>
Gramercy town	37	49	12
Kenner city	40	51	11
Unincorporated Jefferson Parish	34	44	10
Slidell city	19	27	8
Gretna city	47	52	5
Abita Springs town	6	11	5
Lutcher town	50	54	4
Harahan city	5	9	4
Jean Lafitte town	8	12	4

# NEW ORLEANS REGION: Community Type by Municipality and County Unincorporated Area, 2000



Data Source: U.S. Census Bureau.

# NEW ORLEANS REGION: Community Type by Municipality and County Unincorporated Area, 2010



Data Source: U.S. Census Bureau.