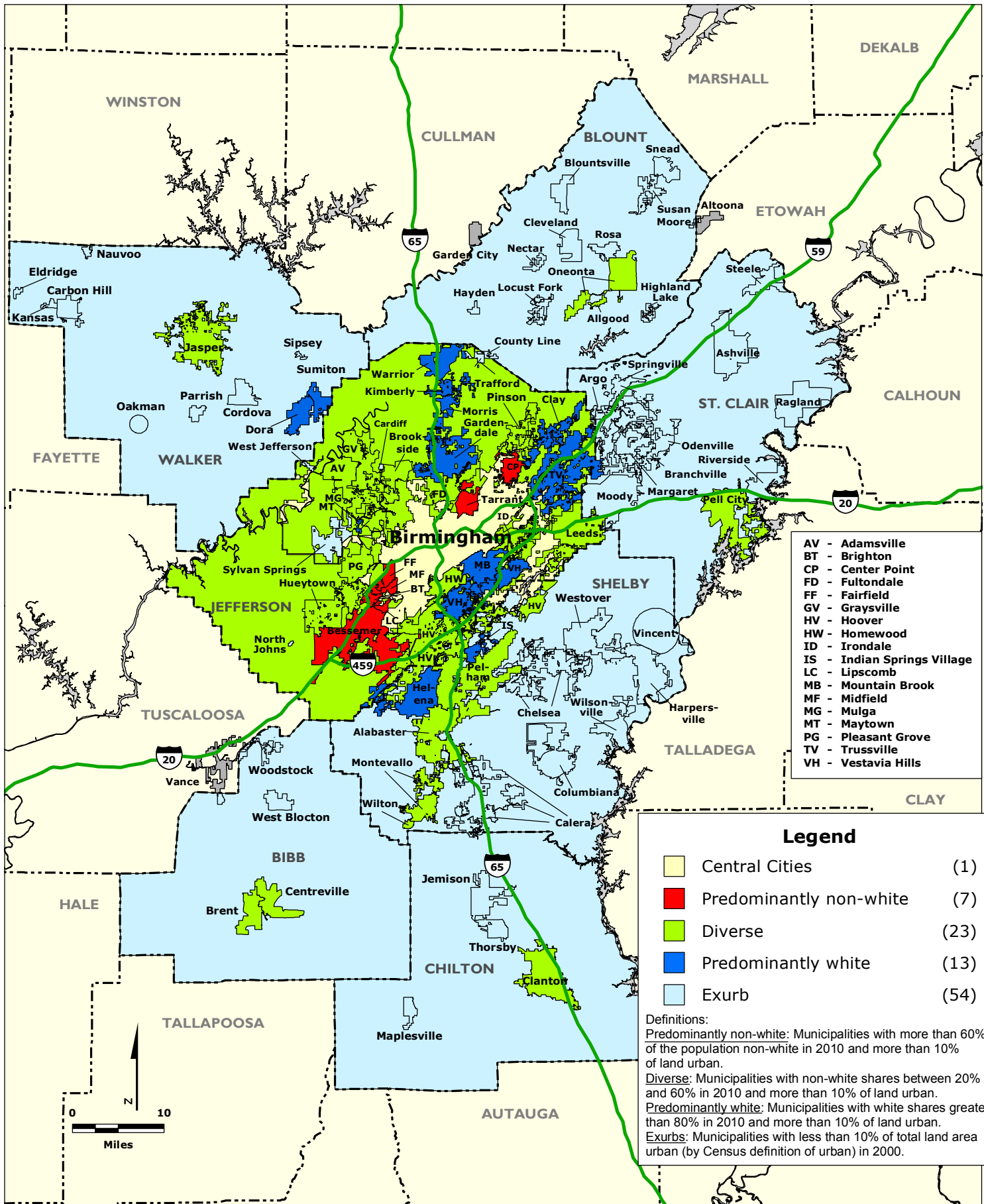


BIRMINGHAM REGION: Community Type by Municipality and County Unincorporated Area, 2010



- AV - Adamsville
- BT - Brighton
- CP - Center Point
- FD - Fultondale
- FF - Fairfield
- GV - Graysville
- HV - Hoover
- HW - Homewood
- ID - Irondale
- IS - Indian Springs Village
- LC - Lipscomb
- MB - Mountain Brook
- MF - Midfield
- MG - Mulga
- MT - Maytown
- PG - Pleasant Grove
- TV - Trussville
- VH - Vestavia Hills

Legend

 Central Cities	(1)
 Predominantly non-white	(7)
 Diverse	(23)
 Predominantly white	(13)
 Exurb	(54)

Definitions:
Predominantly non-white: Municipalities with more than 60% of the population non-white in 2010 and more than 10% of land urban.
Diverse: Municipalities with non-white shares between 20% and 60% in 2010 and more than 10% of land urban.
Predominantly white: Municipalities with white shares greater than 80% in 2010 and more than 10% of land urban.
Exurbs: Municipalities with less than 10% of total land area urban (by Census definition of urban) in 2000.

Data Source: U.S. Census Bureau.