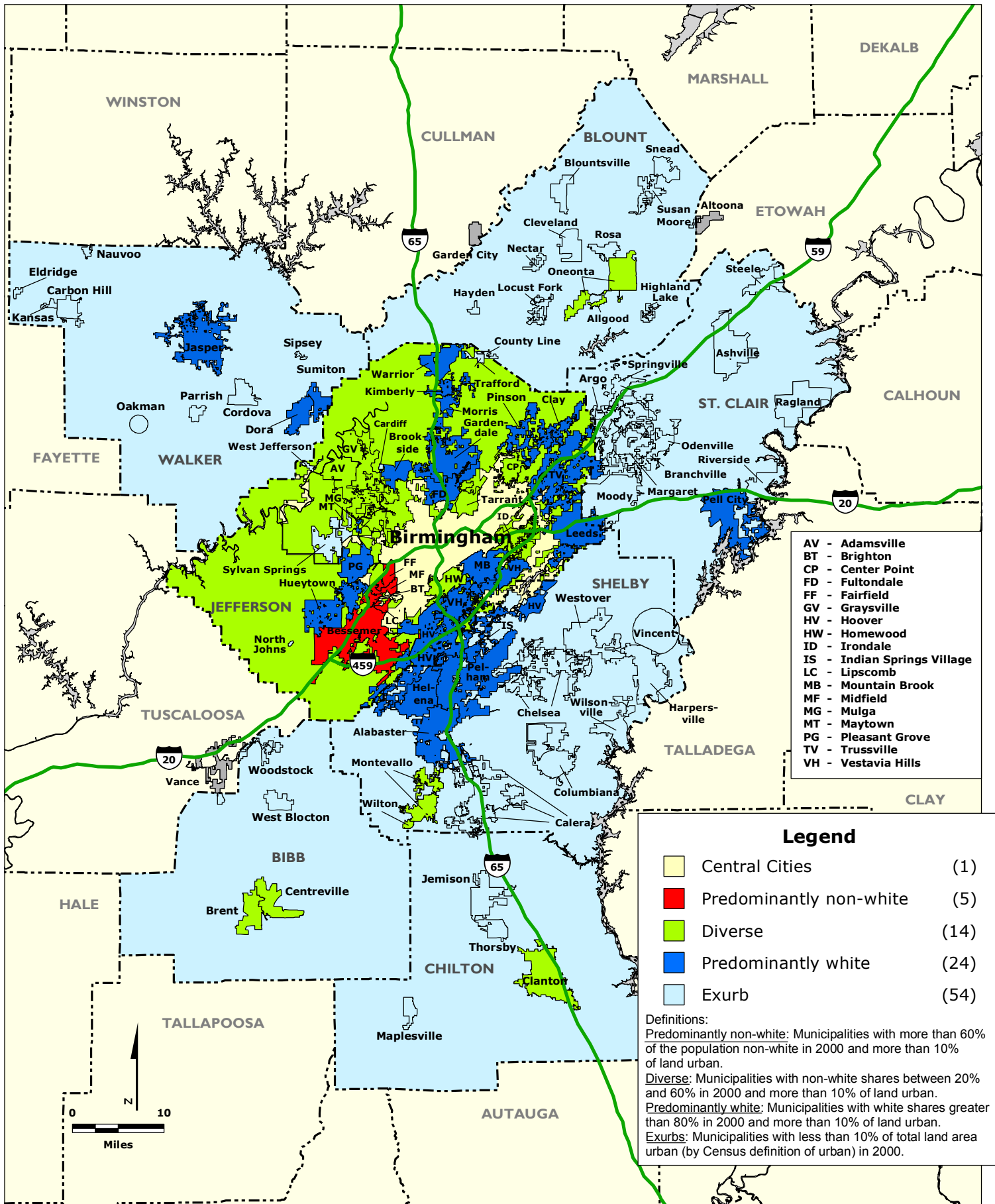


# BIRMINGHAM REGION: Community Type by Municipality and County Unincorporated Area, 2000

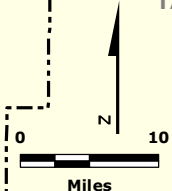


- AV - Adamsville
- BT - Brighton
- CP - Center Point
- FD - Fultondale
- FF - Fairfield
- GV - Graysville
- HV - Hoover
- HW - Homewood
- ID - Irondale
- IS - Indian Springs Village
- LC - Lipscomb
- MB - Mountain Brook
- MF - Midfield
- MG - Mulga
- MT - Maytown
- PG - Pleasant Grove
- TV - Trussville
- VH - Vestavia Hills

**Legend**

<span style="display: inline-block; width: 15px; height: 15px; background-color: yellow; border: 1px solid black;"></span> Central Cities	(1)
<span style="display: inline-block; width: 15px; height: 15px; background-color: red; border: 1px solid black;"></span> Predominantly non-white	(5)
<span style="display: inline-block; width: 15px; height: 15px; background-color: green; border: 1px solid black;"></span> Diverse	(14)
<span style="display: inline-block; width: 15px; height: 15px; background-color: blue; border: 1px solid black;"></span> Predominantly white	(24)
<span style="display: inline-block; width: 15px; height: 15px; background-color: lightblue; border: 1px solid black;"></span> Exurb	(54)

Definitions:  
**Predominantly non-white:** Municipalities with more than 60% of the population non-white in 2000 and more than 10% of land urban.  
**Diverse:** Municipalities with non-white shares between 20% and 60% in 2000 and more than 10% of land urban.  
**Predominantly white:** Municipalities with white shares greater than 80% in 2000 and more than 10% of land urban.  
**Exurbs:** Municipalities with less than 10% of total land area urban (by Census definition of urban) in 2000.



Data Source: U.S. Census Bureau.