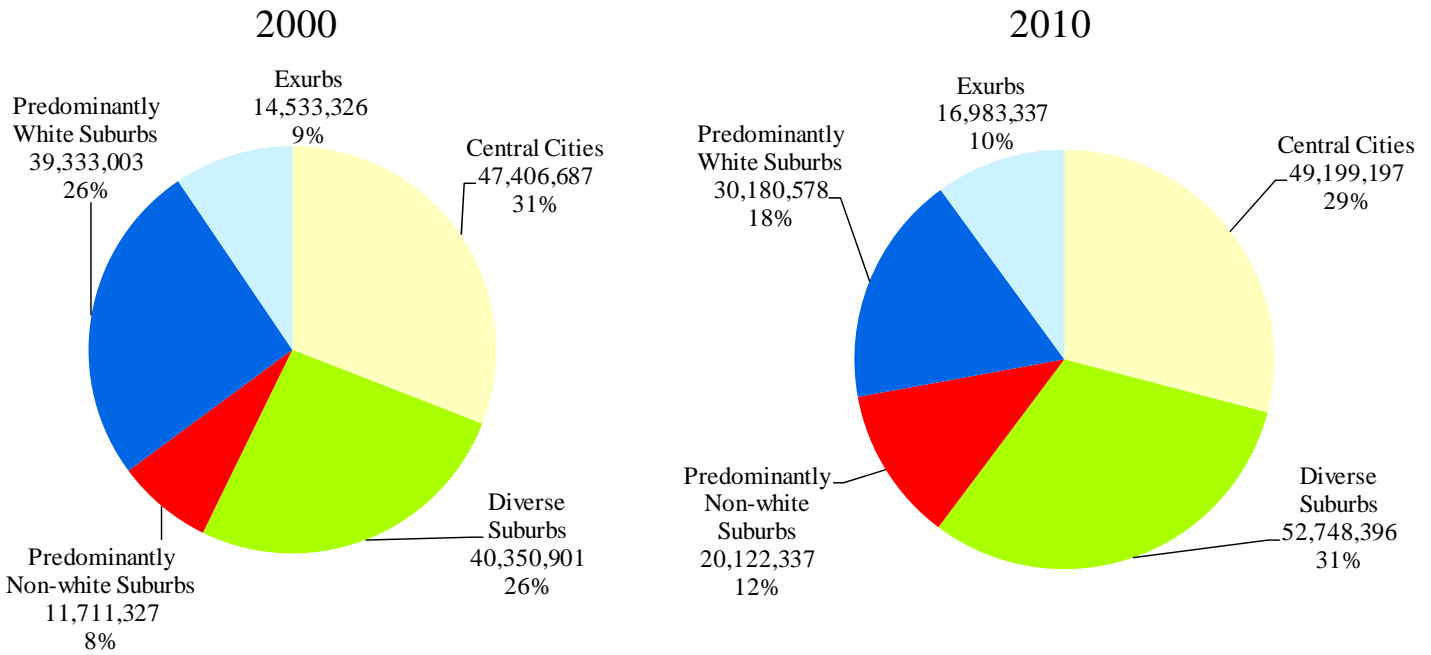


America's Racially Diverse Suburbs: Opportunities and Challenges

50 Largest U.S. Metropolitan Areas

Community types in the 50 largest metropolitan areas



Characteristics of the Community Types in the 50 largest metropolitan areas

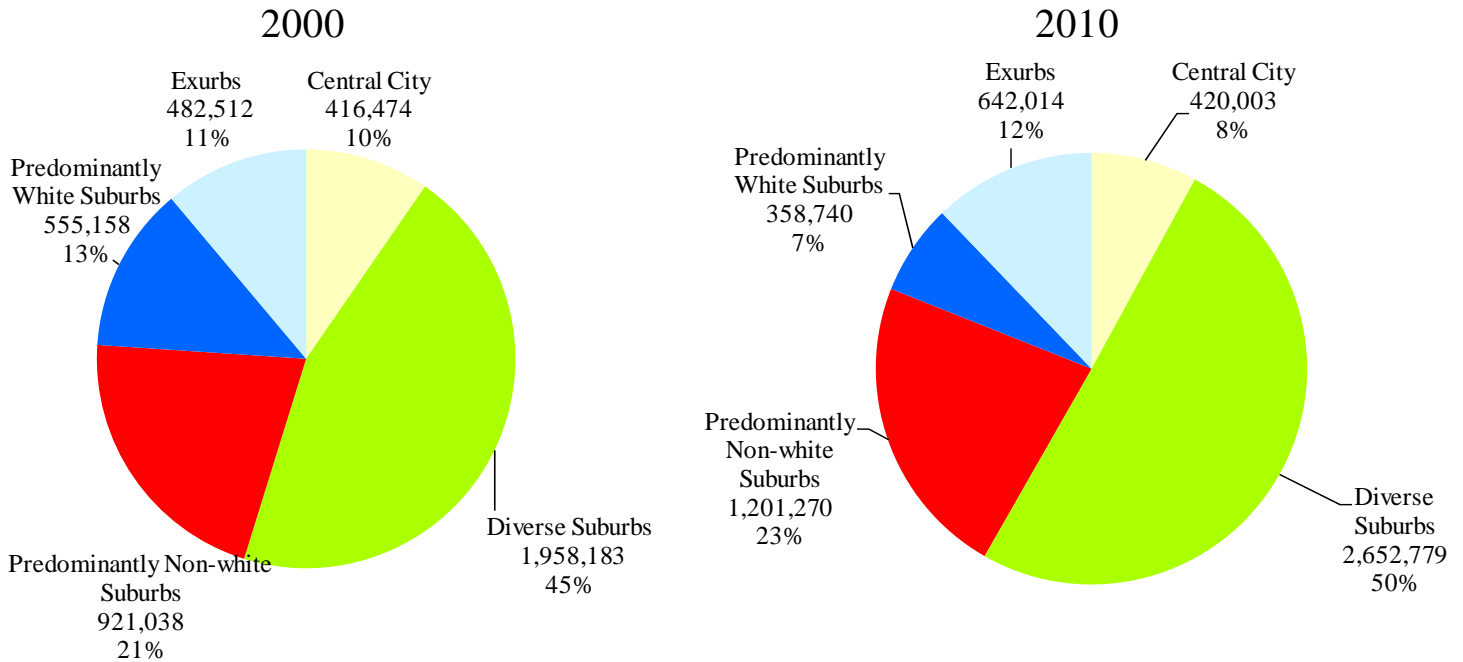


Data Sources: Population, income and poverty—Census Bureau; Jobs—Local Employer-Household Dynamics Program; Tax base—various state and local government sources.

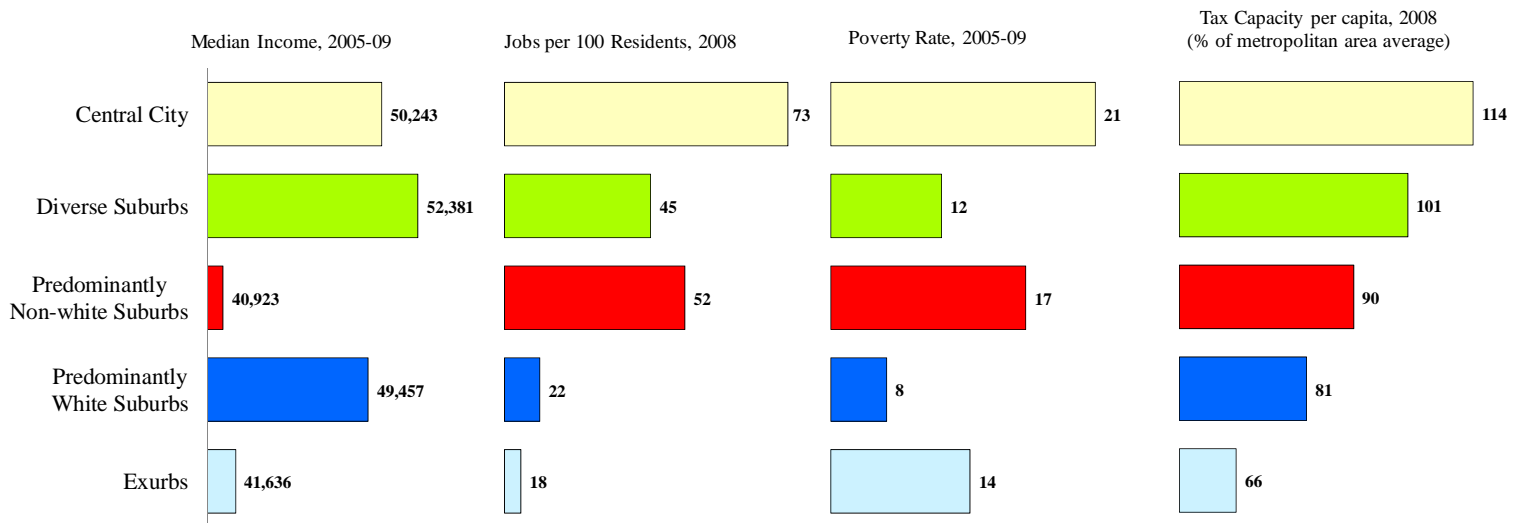
America's Racially Diverse Suburbs: Opportunities and Challenges

Atlanta Metropolitan Area

Community Types in Atlanta



Characteristics of the Community Types in Atlanta



Data Sources: Population, income and poverty—Census Bureau; Jobs—Local Employer-Household Dynamics Program; Tax base—various state and local government sources.

Atlanta Metropolitan Area: Fact Sheet

Breakdown of Community Type

	2010 <u>Population</u>	Share of Metro <u>Population</u>	Share of Suburban <u>Population</u>
Diverse	2,652,779	50	55
Predominantly non-white	1,201,270	23	25
Predominantly white	358,740	7	7
Exurb	642,014	12	13
Central City	420,003	8	

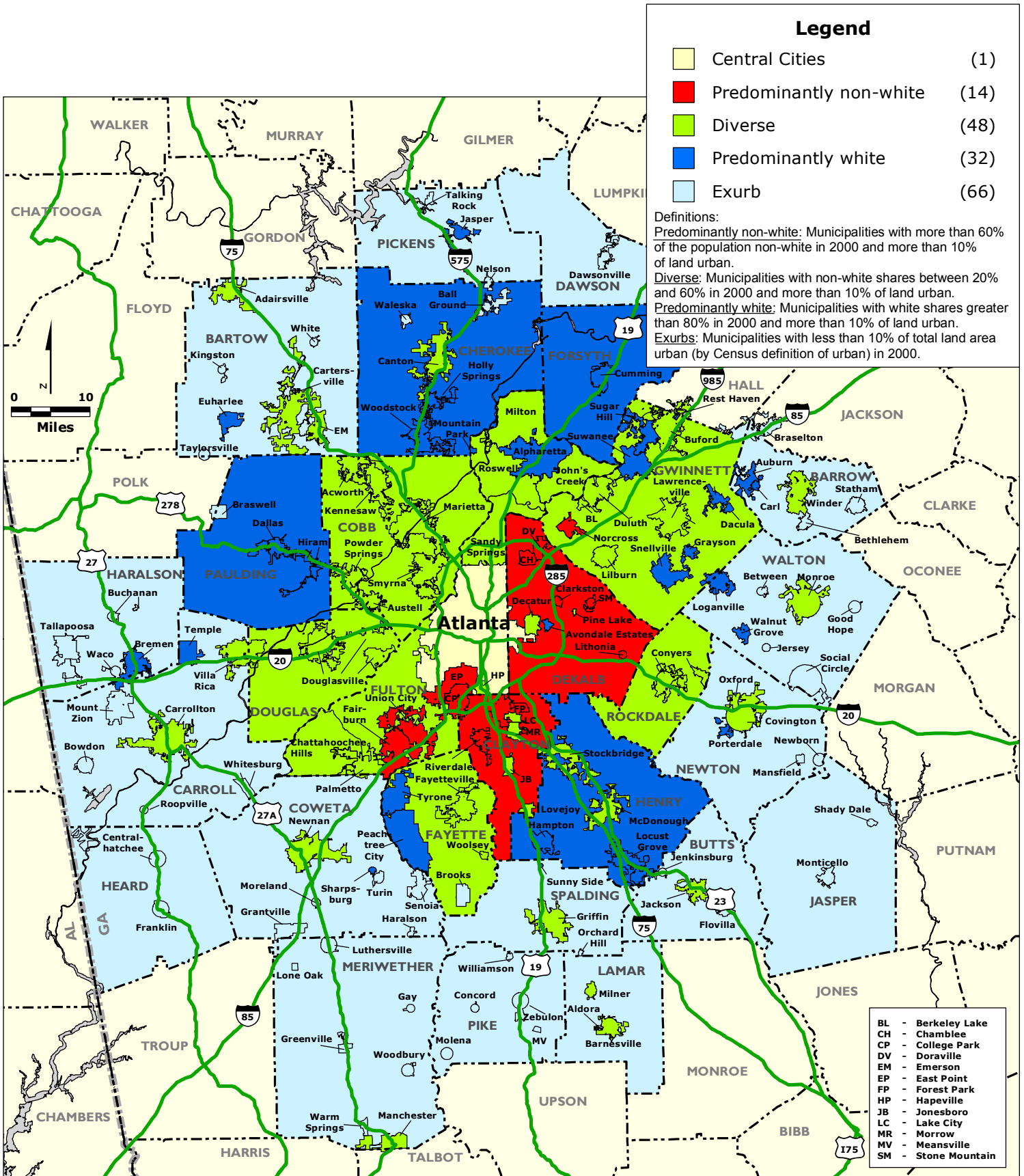
Examples of Large Diverse Suburbs

	2000 <u>Population</u>	2010 <u>Population</u>	2010 % of Population <u>Non-white</u>
Unincorporated Gwinnett County	469,931	651,695	57
Unincorporated Cobb County	455,196	509,539	41
Unincorporated Henry County	94,816	143,813	39
Unincorporated Paulding County	75,223	126,994	23
Unincorporated Douglas County	69,645	95,813	46
Sandy Springs city	85,781	93,853	41
Roswell city	79,334	88,346	34
Johns Creek city	60,628	76,728	40
Unincorporated Rockdale County	59,422	70,020	56
Alpharetta city	34,854	57,551	35
Marietta city	58,748	56,579	57
Smyrna city	40,999	51,271	53
Unincorporated Fayette County	43,891	48,697	34

Examples of Suburbs in Rapid Transition

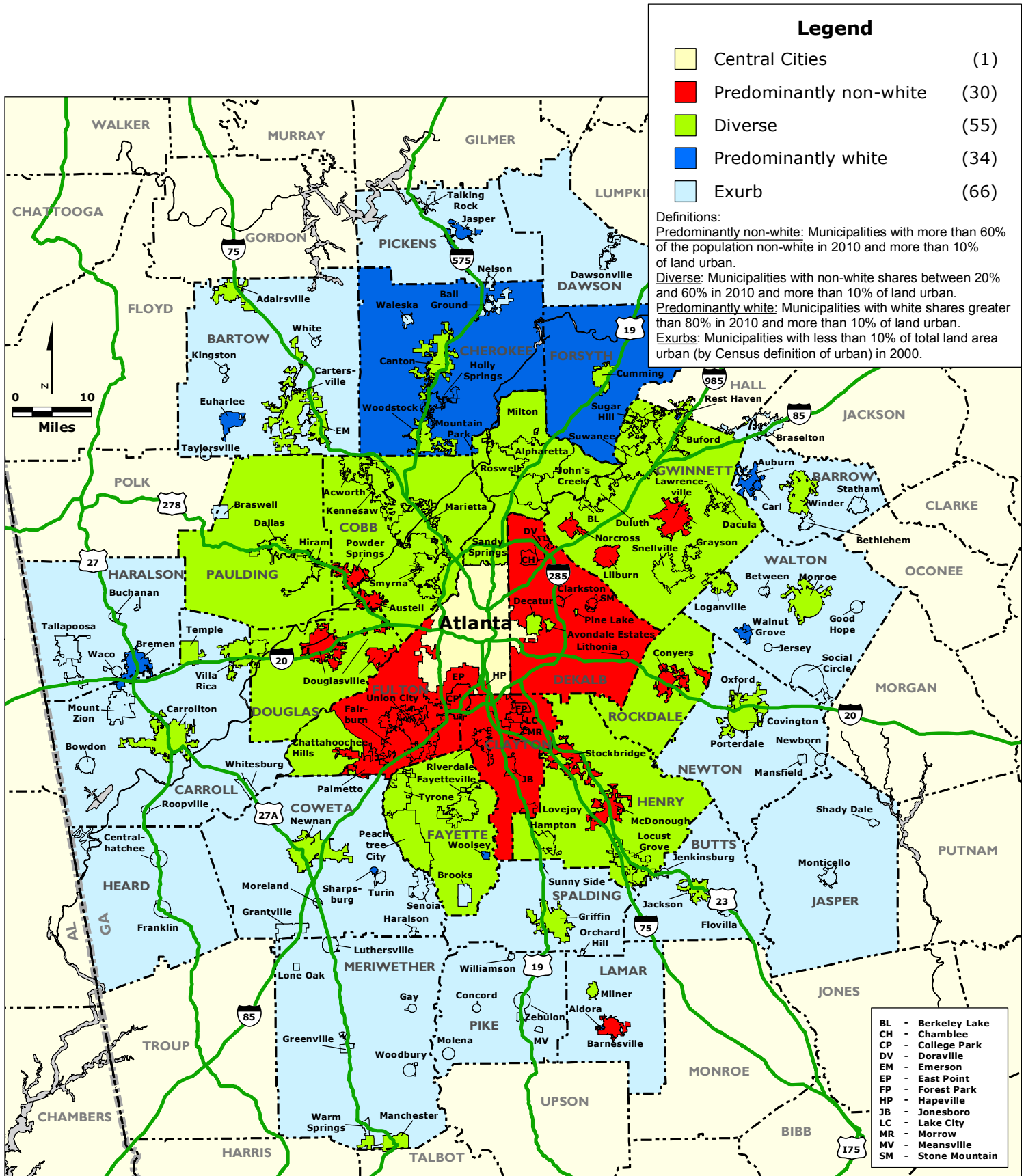
	2000 % of Population <u>Non-white</u>	2010 % of Population <u>Non-white</u>	% Point <u>Change</u>
Lovejoy city	37	86	49
Stockbridge city	31	75	44
Grayson city	5	40	35
Hampton city	17	50	33
Austell city	38	71	33
Unincorporated Rockdale County	24	56	32
Lawrenceville city	31	62	31

ATLANTA REGION: Community Type by Municipality and County Unincorporated Area, 2000



Data Source: U.S. Census Bureau.

ATLANTA REGION: Community Type by Municipality and County Unincorporated Area, 2010



Data Source: U.S. Census Bureau.