

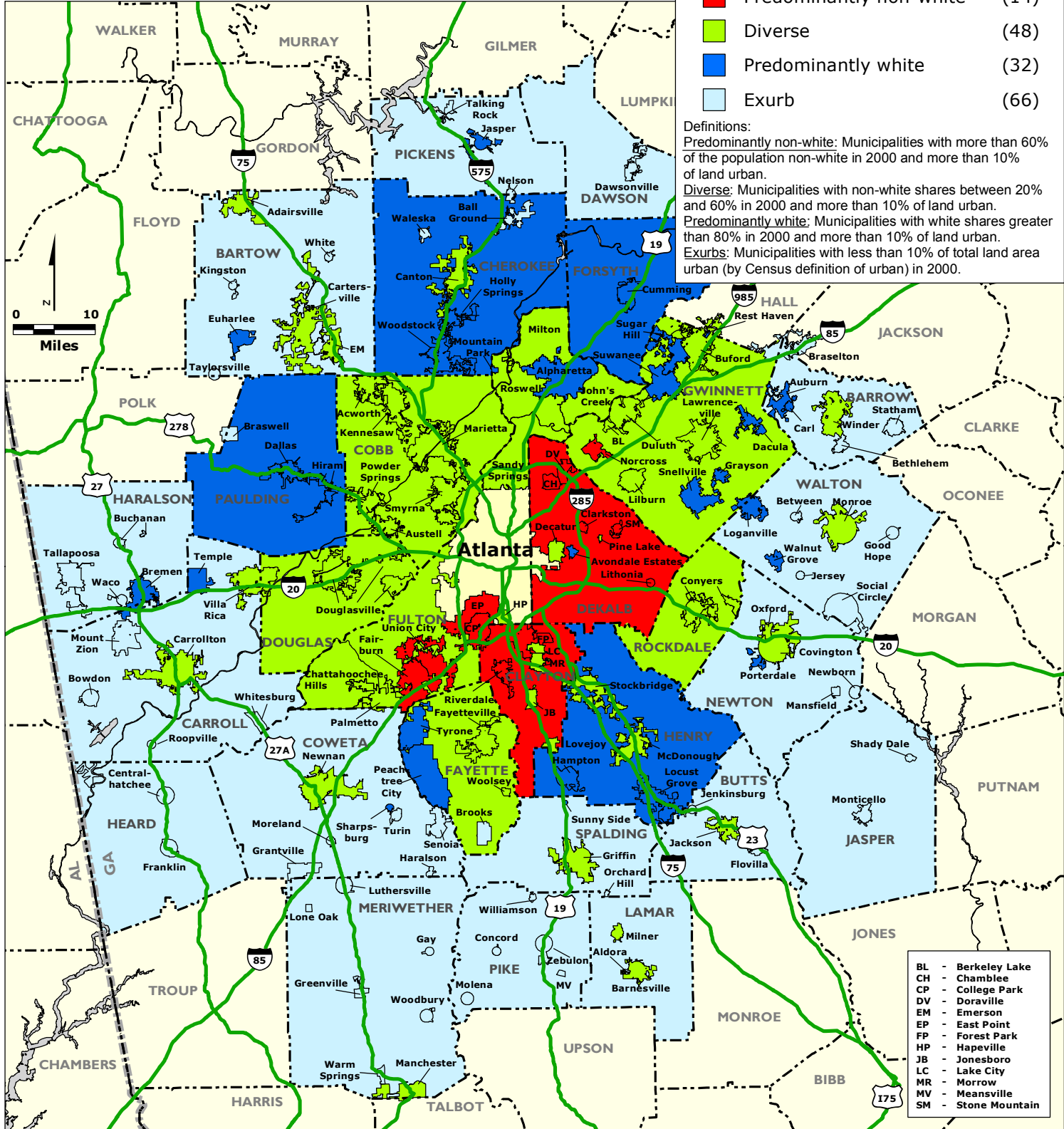
ATLANTA REGION: Community Type by Municipality and County Unincorporated Area, 2000

Legend

	Central Cities	(1)
	Predominantly non-white	(14)
	Diverse	(48)
	Predominantly white	(32)
	Exurb	(66)

Definitions:
Predominantly non-white: Municipalities with more than 60% of the population non-white in 2000 and more than 10% of land urban.
Diverse: Municipalities with non-white shares between 20% and 60% in 2000 and more than 10% of land urban.
Predominantly white: Municipalities with white shares greater than 80% in 2000 and more than 10% of land urban.
Exurbs: Municipalities with less than 10% of total land area urban (by Census definition of urban) in 2000.

BL	- Berkeley Lake
CH	- Chamblee
CP	- College Park
DV	- Doraville
EM	- Emersion
EP	- East Point
FP	- Forest Park
HP	- Hapeville
JB	- Jonesboro
LC	- Lake City
MR	- Morrow
MV	- Meansville
SM	- Stone Mountain



Data Source: U.S. Census Bureau.